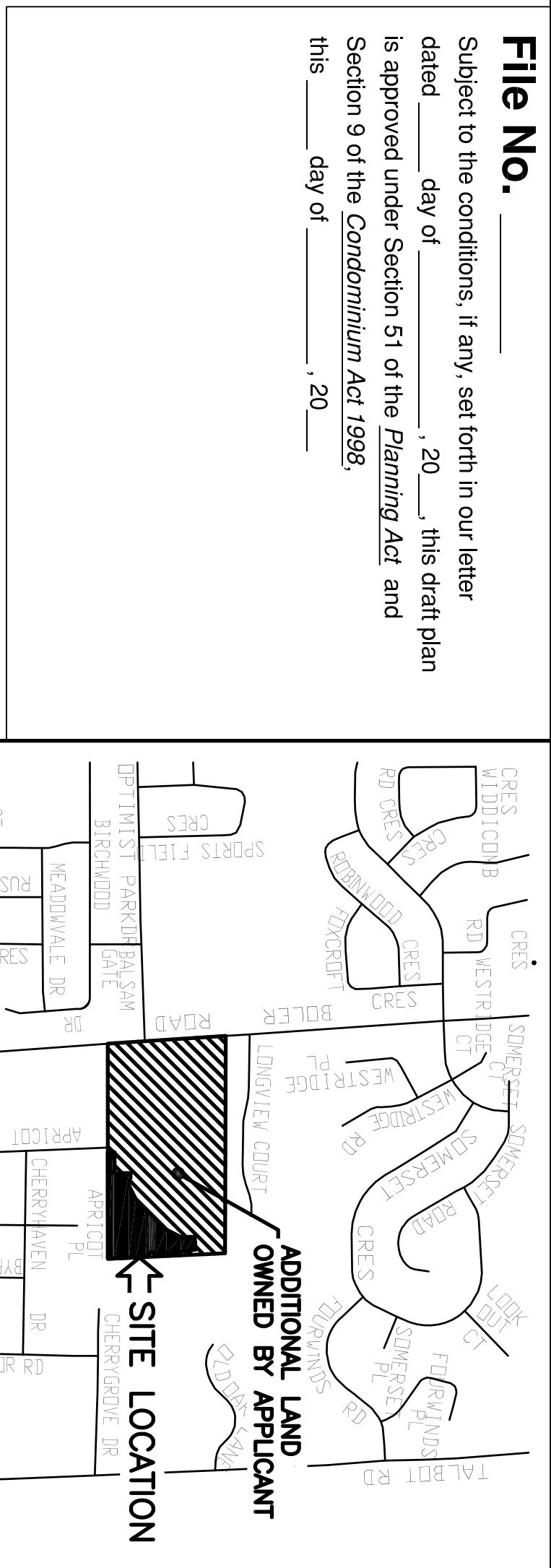


**File No.** \_\_\_\_\_

Subject to the conditions, if any, set forth in our letter dated \_\_\_\_\_ day of \_\_\_\_\_, 20\_\_\_\_, this draft plan is approved under Section 51 of the Planning Act and Section 9 of the Condominium Act, 1998.  
 this \_\_\_\_\_ day of \_\_\_\_\_, 20\_\_\_\_



**KEY PLAN**  
NOT TO SCALE

**DRAFT PLAN OF VACANT LAND CONDOMINIUM**  
OF PART OF  
**BLOCK 46**  
**PLAN 33M-???**

IN THE  
**CITY OF LONDON**  
**COUNTY OF MIDDLESEX**  
SCALE 1:500  
10 8.8 4.4 2.0  
SCALE IN METRES  
10 20 30

**SURVEYOR'S CERTIFICATE:**  
I CERTIFY THAT THE BOUNDARIES OF THE LANDS TO BE SUBDIVIDED AS SHOWN ON THIS PLAN AND THEIR RELATIONSHIP TO ADJACENT LANDS ARE ACCURATELY AND CORRECTLY SHOWN.

**OWNERS CERTIFICATE:**  
WE HEREBY SUBMIT THIS DRAFT PLAN OF VACANT LAND CONDOMINIUM,  
**SOUTHSIDE CONSTRUCTION MANAGEMENT LIMITED**  
LONDON, ONTARIO  
JASON WILBRAND  
ONTARIO LAND SURVEYOR

I HAVE THE AUTHORITY TO BIND THE CORPORATION  
VITO FRUJA  
PRESIDENT  
DATE \_\_\_\_\_

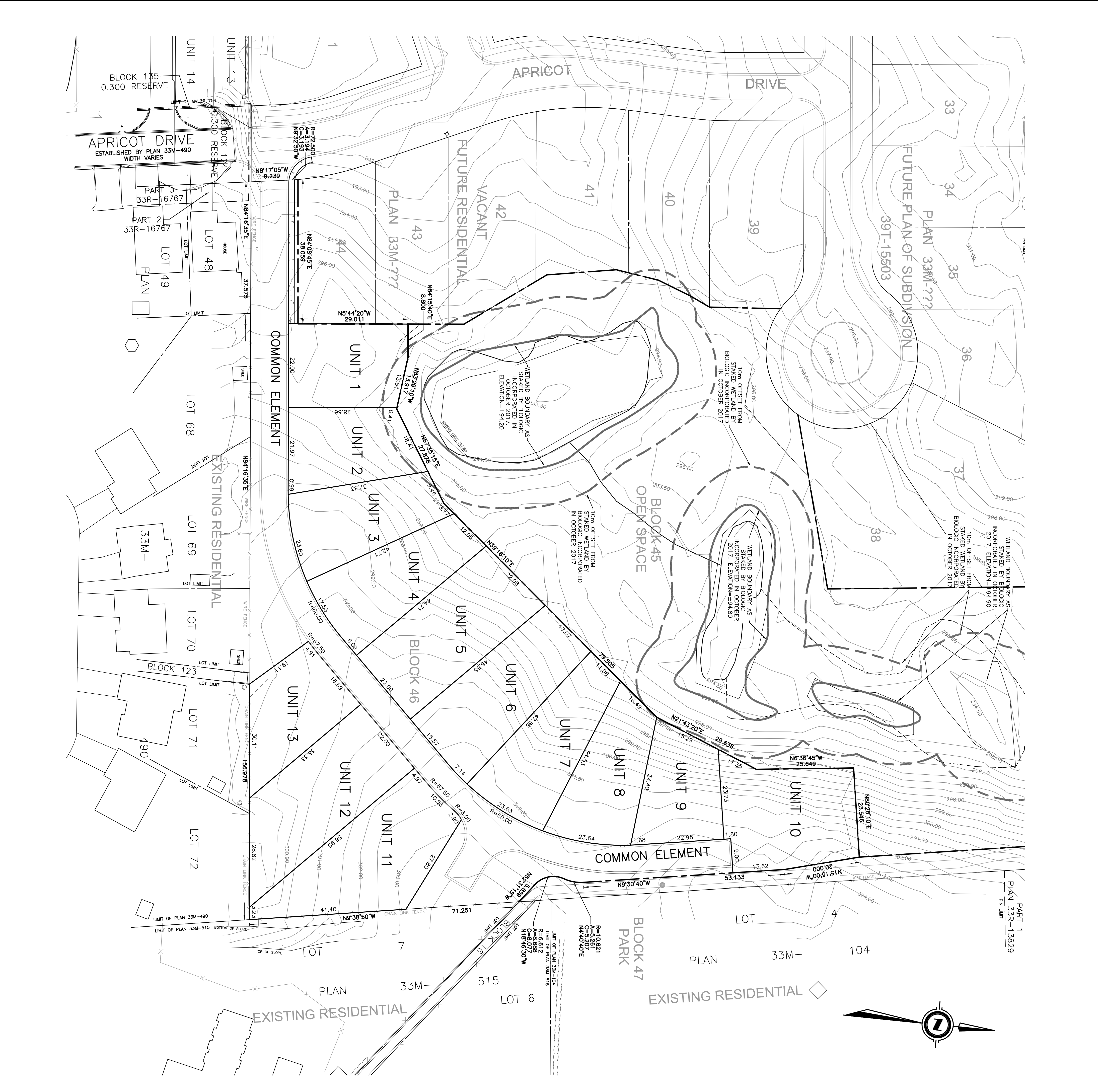
**ADDITIONAL INFORMATION REQUIRED UNDER SECTION 51 (17) OF THE PLANNING ACT:**  
 (a) AS SHOWN ON PLAN (g) AS SHOWN ON PLAN  
 (b) AS SHOWN ON PLAN (h) MUNICIPAL PAVED WATER  
 (c) AS SHOWN ON KEY PLAN (i) SANDY  
 (d) VACANT LAND CONDOMINIUM UNITS (j) ENGINEER'S SITE GRADING PLAN  
 (e) AS SHOWN ON PLAN (k) ALL MUNICIPAL SERVICES AVAILABLE  
 (f) AS SHOWN ON PLAN (l) AS SHOWN

LAND USE	REQUIREMENT	PROPOSED
LOT AREA	500m <sup>2</sup> MIN.	13.9m <sup>2</sup>
LOT FRONTAGE	1.2m MIN.	6.2m
FRONT YARD SETBACK	6.0m MIN.	6.0m
EXTENSION YARD SETBACK	6.0m MIN.	6.0m
INTERIOR YARD SETBACK	3.0m MIN.	6.0m
REAR YARD DEPTH	6.0m MIN.	6.0m
LOT COVERAGE	40% MAX.	40% MAX.
LANDSCAPE OPEN SPACE	35% MIN.	42.0%
BUILDING HEIGHT	12.5m	10.5 MAX.
DENSITY	3.75 UNITS/HA MAX.	9.5 UNITS/HA

**METRIC:**  
DIMENSIONS SHOWN ON THIS PLAN ARE IN METRES AND CAN BE CONVERTED TO FEET BY DIVIDING BY 0.3048  
AREAS SHOWN ON THIS PLAN ARE IN HECTARES AND CAN BE CONVERTED TO ACRES BY MULTIPLYING BY 2.471054.

**AGM**  
ARCHIBALD, GRAY & MCKAY LTD.  
5514 WHITE OAK ROAD, LONDON, ON, N6E 2Z9  
TEL: 514-833-8888  
FAX: 514-833-8889  
EMAIL: info@agm.on.ca  
WEB: www.agm.on.ca

PLAN No. **8-L-5679**



**UTM GRID NOTE:**

BEARINGS ARE UTM GRID, DERIVED FROM SPECIFIED CONTROL POINTS 058944657 AND 025944458, UTM ZONE 17J, NAD83 (ORIGINAL).  
 DISTANCES SHOWN ON THIS PLAN ARE ADJUSTED GROUND LEVEL DISTANCES AND CAN BE USED TO COMPUTE GRID COORDINATES BY MULTIPLYING THE DISTANCES BY A COMBINED SCALE FACTOR OF 0.9999988843.

SPECIFIED CONTROL POINTS (SCP): UTM, ZONE 17J, NAD83 (ORIGINAL) COORDINATES TO UTM

POINT ID	NORTHINGS	EASTINGS
SCP 025944458	4735362.630	4742127.239
1	475424.521	473222.995
2	4754080.894	473254.768

COORDINATES CANNOT, IN THEMSELVES, BE USED TO RE-ESTABLISH CORNERS OR BOUNDARIES SHOWN ON THIS PLAN.

NO.	REVISIONS	DATE	BY
1	INITIAL RELEASE		CRG